

IMPORTING FROM MS PROJECT 98

Title	Importing from MS Project 98
Category	IMPORT EXPORT
Document Number	TN0033
Software version	1.06 b8
Application	SITEPLAN
Create Date	17 July 2003
Revision Date	21 July 2003
Document Version	Final
Author	Louis Reynolds
Support	siteplan@ccssa.com

INTRODUCTION

MPX?

MPX stands for MS Project eXport format. An MPX file must be a comma delimited text file with a ".MPX" extension. MPX files work best if exported by MSProject or SureTrak. Project Scheduler can also export MPX files.

General differences between SitePlan and MS Project, P3, SureTrak

In other project planning products, a Start Lead is the number of **days** from the start of a predecessor to the start of the successor.

A Start Lead in SitePlan is the number of **days of work done** in the predecessor before the successor can start.

This will cause differences in results when there is progress out of sequence. The same applies to End Lags.

Problems with MSProject 98 and MPX

MSProject 98 does not export split bars to MPX. The duration of a bar that has been split is the number of days of work to be done. This will result in an earlier finish for this activity.

Problems with MSProject 2000 and MPX

MSProject 2000 does not export MPX files.

There is, however, a free-ware tool that can convert MSProject 2000 files to MPX. This is available at www.download.com, look for Project 2000 Exchange Wizard. This requires 1.06b8.

Another option is to save the project as a MSProject 98 file. Use MSProject 98 to save the data as an MPX file.

Problems with P3 and MPX

P3 uses activity codes rather than an outline level to describe a logical order to activities. This means that there are no headers to import into SitePlan and the order of activities will be random.

Problems with SureTrak and MPX

Activity ids from SureTrak are not imported into the Import Code column.

If "outline level" has been used to organise the data then the order of the activities and the headers will be exported perfectly. If a code structure has been used then NO headers will be exported by SureTrak. The best solution in this case will be to save the project as a P3 Concentric file and use P3 to do the export.

Disclaimer

Due to differences in calculation and the activity types between products the responsibility for validating the results must lie with those providing the export file and those doing the import into SitePlan.

Problems

Email the file that is being imported to siteplan@ccssa.com. Include your name, company, phone number (international format), version of CCS, version of the product that created the file and any special information i.e. the file has been exported on a non-English machine.

Not done as of CCS2002v1.06

Calendars, progress and resources are NOT imported. Start and end milestones are not imported

METHOD

1. In MS Project

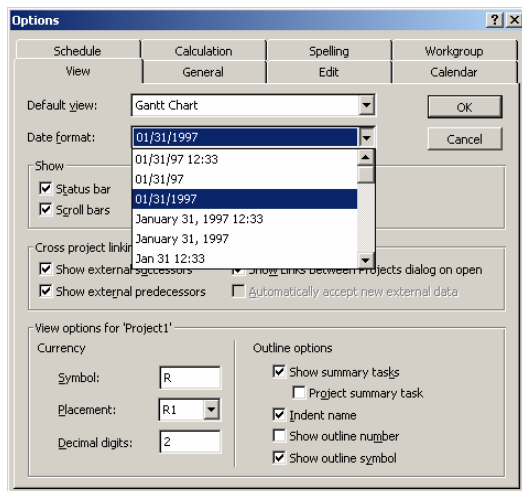
Make sure that the date format of the program is one of the following:

- DD/MM/YYYY (31/12/2001 or 31-12-2001 etc)
- DD/MM/YY (31/12/01)
- MM/DD/YYYY (12/31/2001)
- MM/DD/YY (12/31/01)
- Day DD/MM/YYYY Time (Mon 31/12/2001 14:00 PM)
- ddMMMyy (14Jan01)

Any date separator is supported.

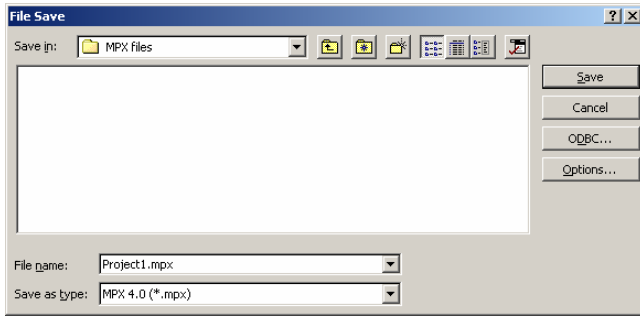
NOTE: 1980 is assumed to be the base date for the non-2000 compliant date formats. Dates that express the month in letters are not supported due to internationalisation problems.

Choose TOOLS/OPTIONS from the menu bar in MS Project. On the view tab change the date format.



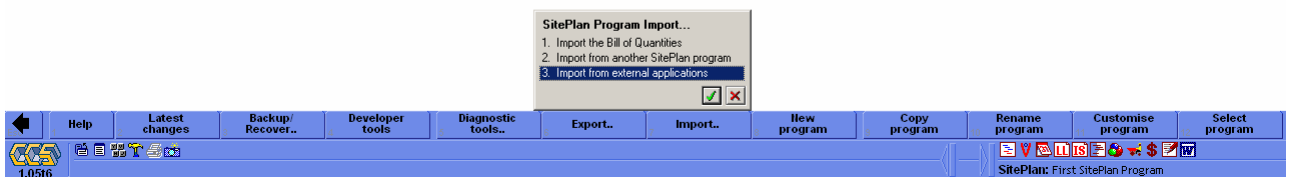
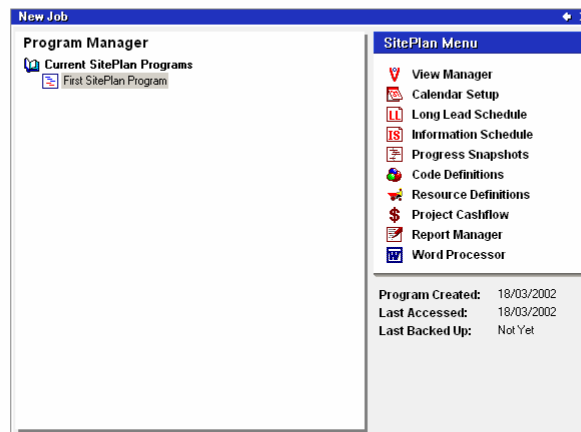
All duration types are supported (hours, days and weeks). Varying types are also supported i.e. where the default set up specifies days, but a specific duration has been set to weeks (3w).

Save the program as an MPX file. Choose FILE/SAVE AS.. from the menu bar in MS Project. Change the "Save as type:" to MPX. Provide a filename and click on the Save button.

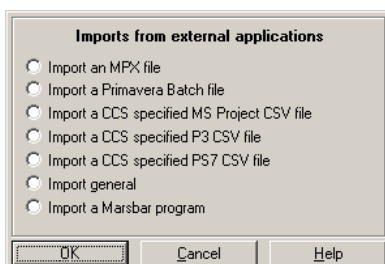


2. In SitePlan

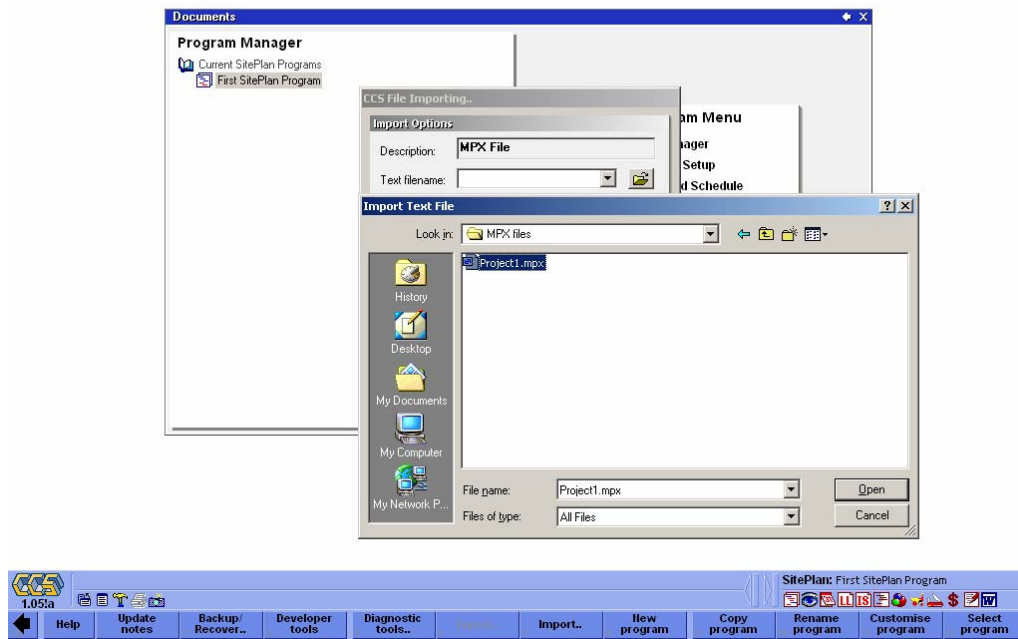
From the SitePlan Program Manager hit the IMPORT softkey...



Select "Import an MPX file".



Either type in the name and path of the MPX file or use the browse icon to find the file. Note that different versions of Windows have different browse controls.



Hit start import when a file has been chosen. The file will be imported. Note that you may be asked if this MPX file came from P3/SureTrak. This is to help with the import of the "activity id" from these two programs. MPX files from Project Scheduler should be treated as though they came from SureTrak.

If the import is successful, the data can be checked using the "Import Checker" view. Check the following:

- Check the start date and calendar.
- Check starts and ends.
- Check for "b-type" activities – might indicate dropped links or starts\ends not imported.
- Check for missing milestones or hammock types.
- Check the level structure.
- Check the logic. Any change made to the logic during the import is written into the Activity Notes column in SitePlan. To see the first note of each activity, set up a view with Activity Note as a column. To view the whole note for an activity double click in the Activity Note column or use the Notes SoftKey.
- Note that the import id column will help to match imported records with records in the original package.