

INTERNAL AND EXTERNAL BILL ITEMS

Title Internal and External Bill Items
Category Post Tender
Document Number TN0046
Software version 1.08
Application CANDY
Create Date 05 April 2004
Revision Date 06 April 2004
Document Version First Draft
Author Evelio De Abreu
Support support@ccssa.com

From time to time it may be necessary to use items that generate internal or external value only. In such a case internal and external items are introduced in exactly the same way as a normal bill item.

In the CCS System it is possible to mark certain bill items as internal items. Internal items will not generate any external value because the Selling Rate is zero. Items marked as Internal will not appear in the client's printouts. The 'I' in the attributes column indicates the Item is Internal.

Similarly it may be necessary to use items that generate external value only. External items will not generate internal allowance because the Nett Rate is zero. Refer to item F as illustrated below.

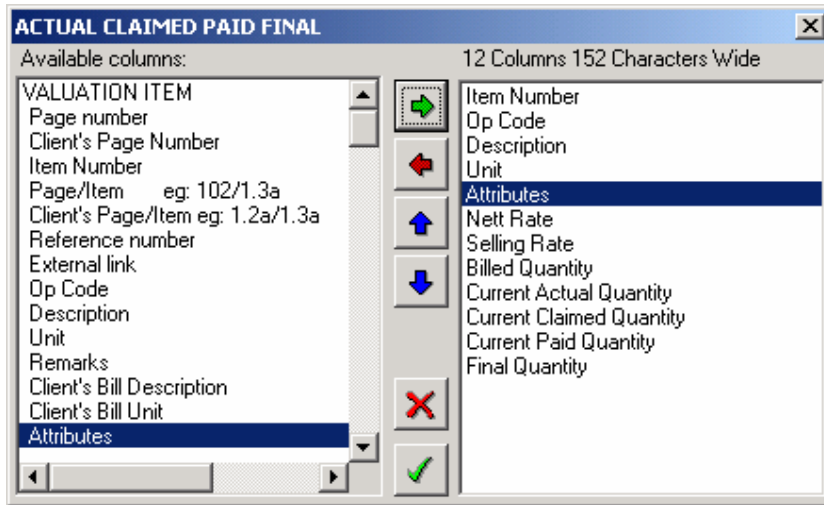
A practical example is controlling the construction of some manholes. The user may wish to release the allowable of the manholes independently to how the manhole is claimed from the client. I.e. if we claim 50% of the manhole without internal items, we will release 50% of the allowable. This may not be correct as we may have only finished all excavations and 30% of the brickwork.


Page 20 Actual Claimed Paid Final												
BOQ PAGE 20		CLIENT'S PAGE										
ITEM	OP CODE	DESCRIPTION	UNIT	ATTR	NETT RATE	SELLING RATE	BILLED QUANTITY	ACTUAL CURR QTY	CLAIMED CURR QTY	PAID CURR QTY	FINAL QUANTITY	
F	L8372a	Manhole size 1200x1200x1500mm deep internally.	no	W		1,493.76x	1	0	0.5	0.5	1	
	E7811a	Excavate in soft for manholes	m3	W I	23.33		39.99	39.99	0	0	39.99	
	C7821a	20 MPa Concrete in manholes	m3	W I	178.75		7.27	7.27	0	0	7.27	
	C7862a	Concrete benching in manholes	m3	W I	237.04		3.60	3.60	0	0	3.60	
	F7825a	Formwork to soffits of manholes	m2	W I	75.98		12.00	0	0	0	12.00	
	F7826a	Formwork in manholes in narrow width	m	W I	15.24		62.40	0	0	0	62.40	
	R7828a	Reinforcing in manholes	kg	W I	0.784		472.60	0	0	0	472.60	
	B7842a	230mm stock brickwork in manholes	m2	W I	59.31		71.82	22	0	0	71.82	
	M7881a	Galv. Step irons	No	W I	6.60		50.00	0	0	0	50.00	
	M7883a	Manhole cover Type 1	No	W I	245.44		10.00	0	0	0	10.00	
	P7864a	One coat plaster in manholes	m2	W I	20.70		55.88	0	0	0	55.88	

How to mark items as internal

Display the Attributes column by pressing CTRL + F1 from within the Valuations document and select Attributes from the options on the left and move it to the right.

Select the same columns as shown below.



Click on  to save the document.

When the Attributes column is visible, mark any item as Internal by clicking on the Set attribute SoftKey and then selecting Internal item.

Printing internal items

The following two reports deals with Printing Internal Items.

Candy System -> Valuations Menu -> Reports Menu -> Interim Payment Claim

Candy System -> Valuations Menu -> Reports Menu -> Valuation Listings